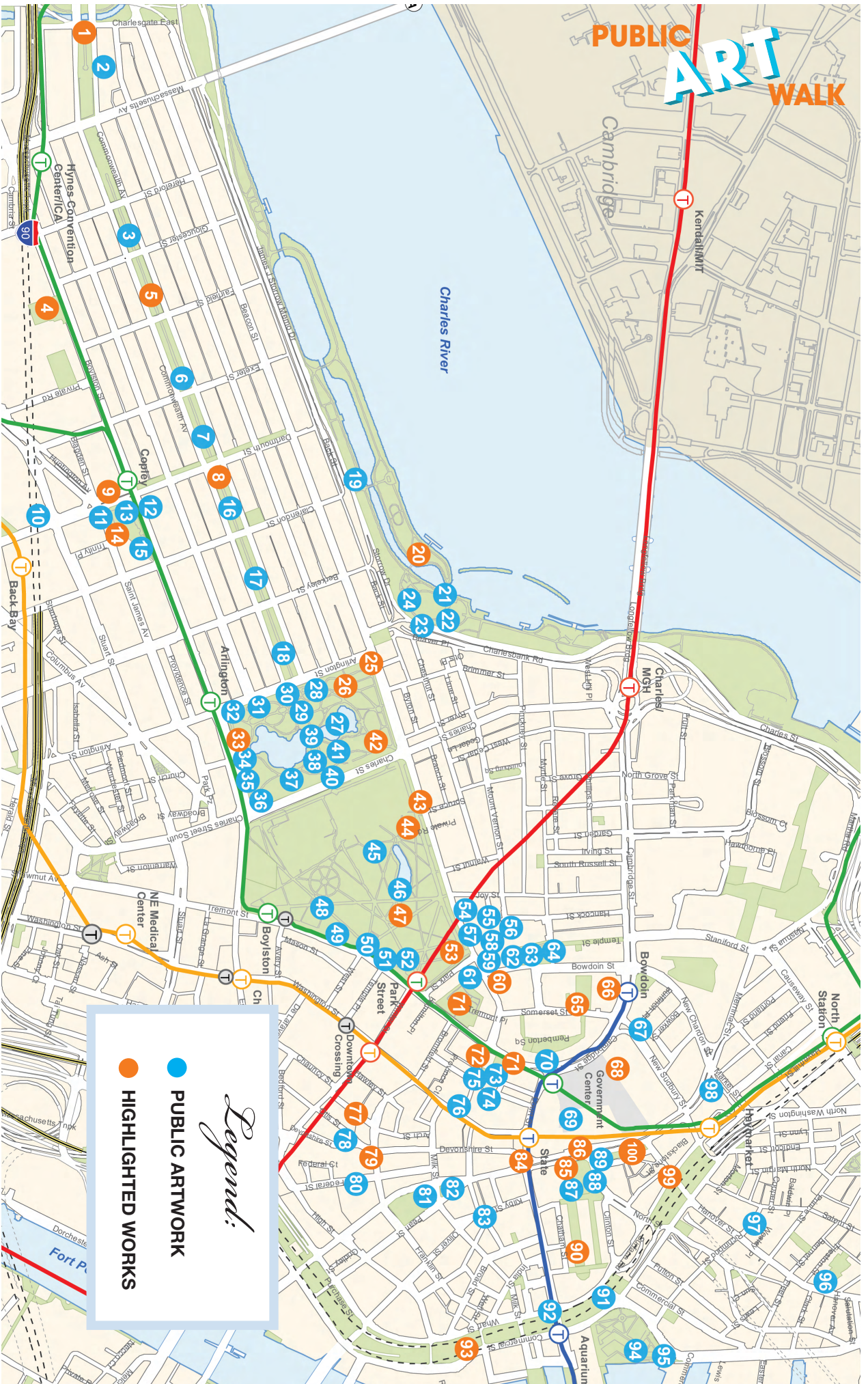


# PUBLIC ART WALK

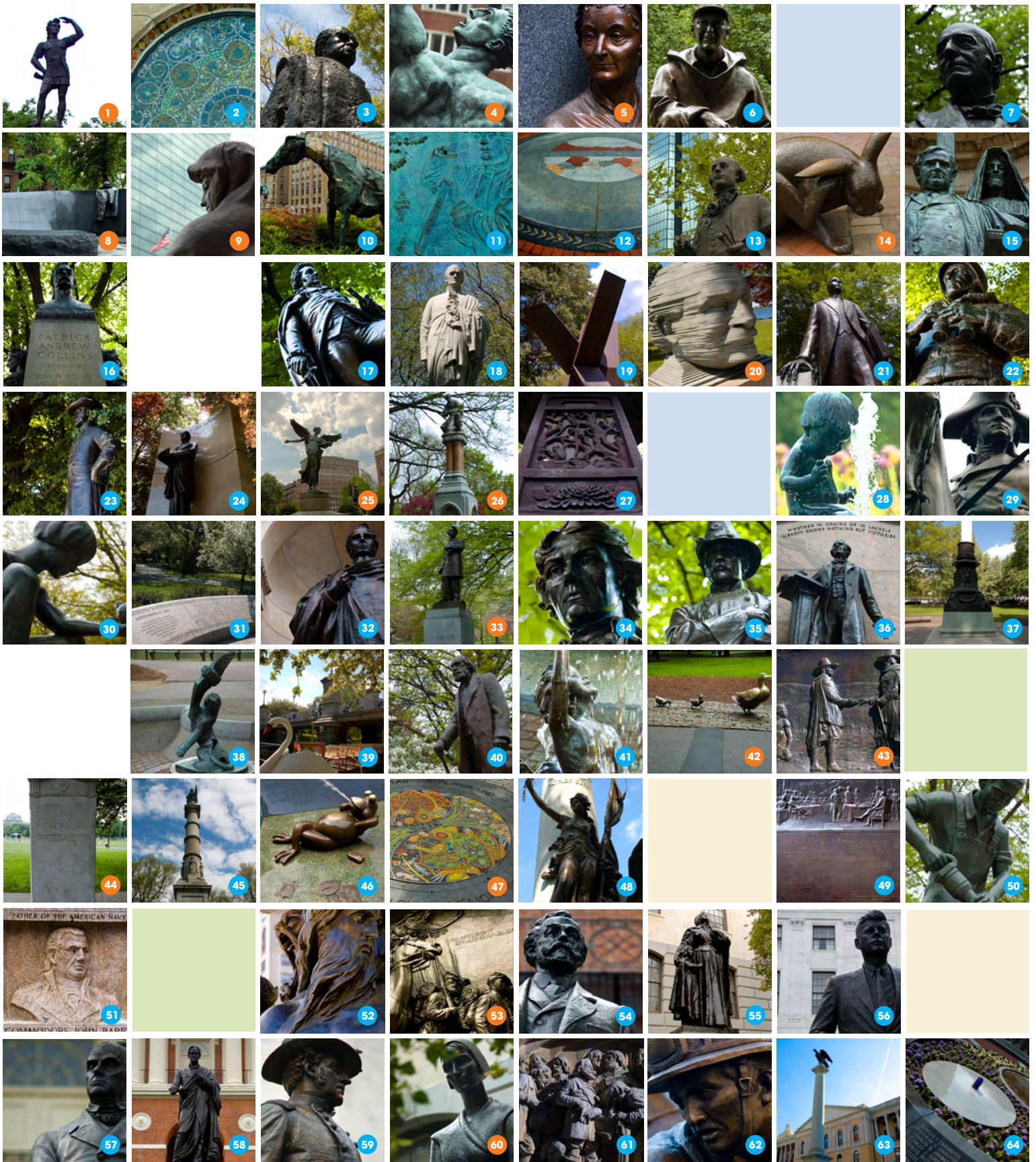


- 1 Leif Eriksson** (1887)  
Anne Whitney  
Bronze on red sandstone pedestal  
Commonwealth Ave. Mall, at Charlesgate East
- 2 Ayer Mansion Windows** (1899)  
Louis Comfort Tiffany  
Mosaic and stained glass  
395 Commonwealth Ave.
- 3 Domingo Faustino Sarmiento** (1973)  
Ivette Compagnion  
Bronze on cement base  
Commonwealth Ave. Mall, between Hereford St. and Gloucester St.
- 4 Quest Eternal** (1967)  
Donald De Lue  
Bronze on granite base  
Prudential Center, at 800 Boylston St.
- 5 Boston Women's Memorial** (2003)  
Meredith Bergmann  
Bronze and granite  
Commonwealth Ave. Mall, between Gloucester St. and Fairfield St.
- 6 Samuel Eliot Morison** (1982)  
Penelope Jencks  
Bronze on granite base  
Commonwealth Ave. Mall, between Exeter St. and Fairfield St.
- 7 William Lloyd Garrison** (1886)  
Olin Levi Warner  
Bronze on Quincy granite base  
Commonwealth Ave. Mall, between Dartmouth St. and Exeter St.
- 8 Vendome Fire Memorial** (1998)  
Ted Clausen and Peter White  
Bronze and black granite  
Commonwealth Ave. Mall, between at Dartmouth St. and Clarendon St.
- 9 Art and Science** (1911)  
Bela Lyon Pratt  
Bronze on granite base  
Boston Public Library, at 700 Boylston St.
- 10 Paint and Henry** (1987)  
Deborah Butterfield  
Bronze  
Copley Place Mall, Dartmouth St. and Stuart St.
- 11 Kahlil Gibran Memorial** (1977)  
Kahlil Gibran (godson)  
Bronze and granite  
Copley Sq., at Dartmouth St.
- 12 Boston Marathon Memorial** (1996)  
Mark Flannery Robert Shure and Robert Lamb  
Granite with bronze reliefs and pink granite bollards  
Copley Sq., at Dartmouth St. and Boylston St.
- 13 John Singleton Copley** (2002)  
Lewis Cohen  
Bronze  
Copley Sq., at Boylston St.
- 14 The Tortoise and the Hare** (1994)  
Nancy Schön  
Silicone bronze  
Copley Sq., at Dartmouth St. and Boylston St.
- 15 Philips Brooks** (1910)  
Augustus Saint Gaudens, Frances Grimes, Stanford White, Charles Follen McKim  
Bronze on marble base  
Trinity Church, in Copley Sq., at Boylston St. and Clarendon St.
- 16 Patrick Andrew Collins** (1908)  
Theo Alice Ruggles Kitson and Henry Hudson Kitson  
Bronze on granite base  
Commonwealth Ave. Mall, between Clarendon St. and Dartmouth St.
- 17 General John Glover Statue** (1875)  
Martin Milmore  
Bronze on granite base  
Commonwealth Ave. Mall, between Berkeley St. and Clarendon St.
- 18 Alexander Hamilton Statue** (1865)  
William Rimmer  
Granite  
Commonwealth Ave. Mall, between Arlington St. and Berkeley St.
- 19 Trimbloid X** (1970)  
David Kibbey  
Cor-ten steel  
Charles River Esplanade, between Dartmouth St. and Clarendon St.
- 20 Arthur Fiedler Memorial** (1984)  
Ralph Helmick  
Aluminium on granite base  
Charles River Esplanade, across from Berkeley Bridge
- 21 Maurice J. Tobin** (1958)  
Emilius Ciampa  
Bronze on granite base  
Charles River Esplanade, along Hatch Shell Circle
- 22 General George Smith Patton, Jr.** (1953)  
James Earle Fraser  
Bronze on pink granite base  
Charles River Esplanade, along Hatch Shell Circle
- 23 General Charles Devens** (1895)  
Olin Levi Warner  
Bronze on granite base  
Charles River Esplanade, along Hatch Shell Circle
- 24 David Ignatius Walsh** (1954)  
Joseph Arthur Coletti  
Bronze on granite base  
Charles River Esplanade, along Hatch Shell Circle
- 25 George Robert White Memorial** (1924)  
Daniel Chester French  
Bronze on Rockport granite base  
Boston Public Garden, at Arlington St. and Beacon St.
- 26 Ether Monument / Good Samaritan** (1868)  
John Quincy Adams Ward  
Granite and red marble  
Boston Public Garden, near Arlington St. and Beacon St.
- 27 Japanese Lantern** (donated to the city in 1904)  
Unknown  
Iron  
Boston Public Garden, near footbridge
- 28 Small Child Fountain** (1929)  
Mary E. Moore  
Bronze on granite base  
Boston Public Garden, at Arlington St.
- 29 George Washington** (1869)  
Thomas Ball  
Bronze on granite base  
Boston Public Garden, at Arlington St.
- 30 Boy and Bird Fountain** (1927)  
Bashka Paeff, Paul King Foundry (recast)  
Bronze with granite base  
Boston Public Garden, at Arlington St.
- 31 Garden of Remembrance: 9/11 Memorial** (2004)  
Victor Walker  
Pink granite  
Boston Public Garden, at Arlington St. entrance
- 32 William Ellery Channing Statue** (1903)  
Herbert Adams  
Bronze, granite, marble  
Boston Public Garden, at Arlington St. and Boylston St.
- 33 Charles Sumner Statue** (1878)  
Thomas Ball  
Bronze on granite base  
Boston Public Garden, on Boylston St. Mall
- 34 Tadeusz Kosciuszko** (1927)  
Theo Alice Ruggles Kitson  
Bronze on granite base  
Boston Public Garden, on Boylston St. Mall
- 35 Colonel Thomas Cass** (1899)  
Richard Edwin Brooks  
Bronze on granite base  
Boston Public Garden, on Boylston St. Mall
- 36 Wendell Phillips** (1915)  
Daniel Chester French  
Bronze on granite base  
Boston Public Garden, on Boylston St. Mall
- 37 Flagpole Base and Goody Memorial** (1921/1984)  
William D. Austen and Joanne Goody  
Bronze and granite  
Boston Public Garden, at Charles St.
- 38 Bagheera Fountain** (1986)  
Lillian Saarinen  
Bronze with granite base  
Boston Public Garden, at Charles St.
- 39 Public Garden Footbridge** (1867)  
Clemens Herschel and William G. Preston  
Grey stone and steel  
Boston Public Garden, across Lagoon
- 40 Edward Everett Hale** (1913)  
Bela Lyon Pratt  
Bronze on pink granite base  
Boston Public Garden, near Charles St.
- 41 Triton Babies** (1922)  
Anna Coleman Ladd  
Bronze with granite basin  
Boston Public Garden, at Charles St.
- 42 Make Way for Ducklings** (1987)  
Nancy Schön  
Bronze  
Boston Public Garden, at Beacon St. and Charles St.
- 43 The Founders Memorial** (1930)  
John Francis Paramino  
Bronze set in granite relief, slate and cast iron base  
Boston Common, at Beacon St. and Spruce St.
- 44 Oneida Football Tablet** (1925)  
J. Howland Jones and Joseph Coletti  
Granite  
Boston Common, at Beacon St. and Spruce St.
- 45 Soldiers' and Sailors' Monument** (1877)  
Martin Milmore  
Bronze and Quincy granite  
Boston Common, Flagstaff Hill
- 46 Frogs of Tadpole Playground** (2002)  
David Phillips  
Bronze  
Boston Common, at Beacon St. near Frog Pond
- 47 Mosaics in Tadpole Playground** (2002)  
Marvin and Lilli Ann Killen Rosenberg  
Mosaic  
Boston Common, at Beacon St. near Frog Pond
- 48 Boston Massacre Monument / Crispus Attucks Monument** (1889)  
Robert Adolf Kraus  
Bronze and granite  
Boston Common, at Tremont St.
- 49 Declaration of Independence Tablet** (1925)  
John Francis Paramino  
Bronze and granite  
Boston Common, at Tremont St.
- 50 Parkman Plaza** (1961)  
Arcangelo Casceri and Adio di Biccari  
Bronze on granite pedestals  
Boston Common, at Tremont St. and West St.
- 51 Commodore John Barry** (1949)  
John Francis Paramino  
Granite  
Boston Common, at Tremont St. and Temple Pl.
- 52 Brewer Fountain** (1855)  
Paul Lienard  
Bronze with granite basin and foundation  
Boston Common, near Park St. at Tremont St. and Temple Pl.
- 53 Robert Gould Shaw and the 54th Regiment** (1897)  
Augustus Saint-Gaudens  
Bronze, marble and granite  
Boston Common, at Beacon St. and Park St.
- 54 Henry Cabot Lodge** (1932)  
Raymond Averill Porter  
Bronze and granite  
Massachusetts State House, on South Lawn at Beacon St.

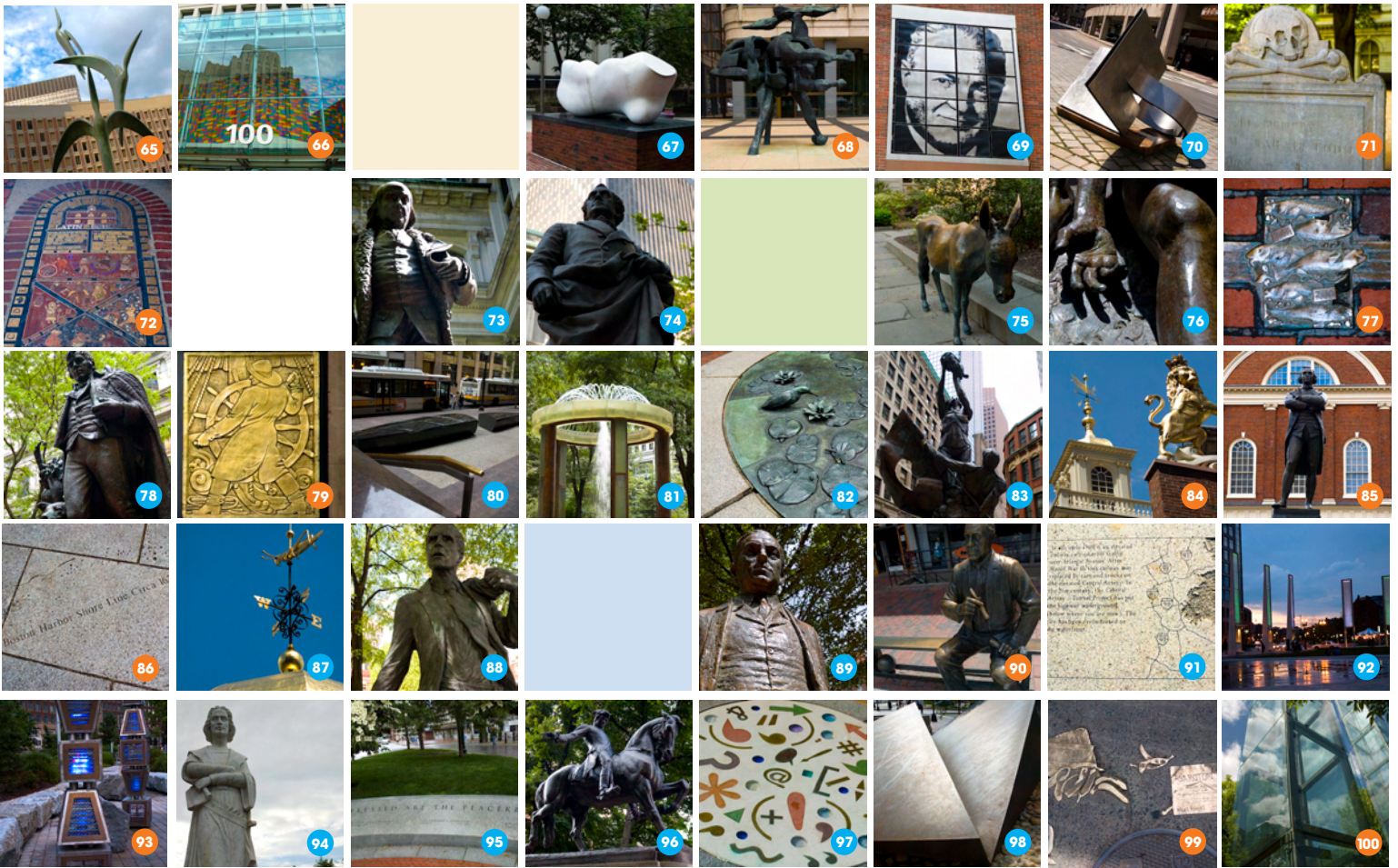


- 55 Anne Hutchinson** (1922)  
Cyrus Edwin Dallin  
Bronze on granite base  
Massachusetts State House, on South Lawn at Beacon St.
- 56 John Fitzgerald Kennedy** (1990)  
Isabel McIlvain  
Bronze with green patina on granite base  
Massachusetts State House, on South Lawn at Beacon St.
- 57 Daniel Webster** (1859)  
Hiram Powers  
Bronze on granite base  
Massachusetts State House, on South Lawn at Beacon St.
- 58 Horace Mann** (1865)  
Emma Stebbins  
Bronze on granite base  
Massachusetts State House, on South Lawn at Beacon St.
- 59 General Joseph Hooker** (1903)  
Daniel Chester French and Edward C. Potter  
Bronze on red granite base  
Massachusetts State House, at east wing entrance on Beacon St.
- 60 Mary Dyer** (1959)  
Sylvia Shaw Judson  
Bronze on stone base  
Massachusetts State House, at Beacon St. and Bowdoin St. near east wing entrance
- 61 Congregational House Bas-Reliefs** (1898)  
Domingo Mora  
Marble  
14 Beacon St. near Bowdoin St.
- 62 Massachusetts Fallen Fireman Memorial** (2007)  
Robert Shure  
Bronze on granite base  
Massachusetts State House, at Bowdoin St. and Ashburton Pl.
- 63 Beacon Hill Eagle Monument** (1898)  
Charles Bulfinch (copy after)  
Bronze on granite column  
Massachusetts State House, at Bowdoin St. and Ashburton Pl.
- 64 Massachusetts Law Enforcement Memorial** (2004)  
unknown  
Granite  
Massachusetts State House, at Bowdoin St. and Ashburton Pl.
- 65 Garden of Peace** (2004)  
Judy Kensley McKie and Catherine Melina  
Bronze, stone and granite  
Cambridge St. and Somerset St.
- 66 Wall drawing # 1128** (2004)  
Sol LeWitt  
Acrylic paint  
100 Cambridge St.
- 67 Human Element** (1981)  
Gerald M. Sherman  
Marble on metal and brick base  
New Sudbury St. and Cambridge St.
- 68 Thermopylae** (1966)  
Dimitri Hadzi  
Bronze  
JFK Federal Building, at Cambridge St. and New Sudbury St.
- 69 Mayor John Frederick Collins** (2002)  
John McCormack  
Stainless steel panels, black oxide  
City Hall Plaza, on City Hall
- 70 Nancy, A Passage of Time** (1978)  
Rick Lee  
Steel  
Scollay Sq., Tremont St. and State St.
- 71 King's Chapel and the Granary Burying Grounds** (various)  
Various  
Various  
Tremont St., both between City Hall and the Boston Common
- 72 City Carpet** (1983)  
Lilli Ann Killen Rosenberg  
Ceramic, brass, brick and concrete  
Old City Hall, on School St.
- 73 Benjamin Franklin** (1856)  
Richard Saltonstall Greenough and Thomas Ball  
Bronze on green marble and gray granite base  
Old City Hall, in courtyard on School St.
- 74 Josiah Quincy** (1879)  
Thomas Ball  
Bronze on granite base  
Old City Hall, in courtyard on School St.
- 75 Democratic Donkey** (unknown)  
Antonio Frilli  
Bronze  
Old City Hall, in courtyard on School St.
- 76 Boston Irish Famine Memorial** (1998)  
Robert Shure  
Bronze on granite base  
Washington St. and School St.
- 77 Boston Bricks** (1985)  
Kate Burke and Gregg Lefevre  
Bronze  
Winthrop Ln., between Arch St. and Otis St.
- 78 Robert Burns** (1920)  
Henry Hudson Kitson  
Bronze on granite base  
Winthrop Sq., at Otis St. and Devonshire St.
- 79 Bronze Panels on 75 Franklin Street Building** (1929)  
Thomas M. James  
Bronze  
75/101 Franklin St.
- 80 Anti-Ram Bench** (2003)  
Fredrick Reeder  
Granite, steel  
100 Federal St.
- 81 Immanent Circumstance** (1992)  
Howard Ben Tre  
Cast low-expansion glass, bronze, granite.  
Post Office Sq., at Congress St. and Milk St.
- 82 Creature Pond** (1982)  
Lowry Burgess, Donald Burgy, John Cataldo, Carlos Dorrien, Robert Guillemin, Davids Phillips, Sydney Roberts Rockefeller, William H. Wainwright, Clara Wainwright  
Bronze on granite base  
Post Office Sq. Park, at Congress St. and Milk St.
- 83 Hungarian Revolution Memorial** (1986)  
Gyuri Hollosy  
Bronze over stainless steel armature on granite  
Liberty Square Park, Kilby St. and Water St.
- 84 Old State House Statues: Unicorn & Lion** (1713/1882)  
Unknown  
Copper  
Old State House, at State St. and Washington St.
- 85 Samuel Adams** (1880)  
Anne Whitney  
Bronze on Quincy granite base  
Faneuil Hall Plaza
- 86 Harbor Shoreline** (1996)  
Ross Miller  
Etched stone  
Faneuil Hall Plaza
- 87 Faneuil Hall Grasshopper** (1742)  
Shem Drowne  
Gilded copper with glass  
Faneuil Hall Market
- 88 Mayor Kevin White** (2006)  
Pablo Eduardo  
Bronze  
Faneuil Hall Plaza
- 89 Mayor James Michael Curley** (1980)  
Lloyd Lillie  
Bronze  
Curley Memorial Park, Congress St. and North St.
- 90 Arnold "Red" Auerbach** (1985)  
Lloyd Lillie  
Bronze  
Quincy Market Mall, on south side
- 91 The Reading Circle** (2008)  
American History Workshop  
Engraved granite  
Greenway, at Milk St. and India St.
- 92 Light Blades** (2008)  
Dennis Carmichael  
Steel, glass, LED lights  
Wharf District Parks at Milk St. and India St.
- 93 Harbor Fog** (2008)  
Ross Miller  
Granite and LED lights  
Greenway, between India St. and High St.
- 94 Christopher Columbus** (1979)  
Andrew J. Mazzola  
Marble, granite and iron  
Christopher Columbus Park, at Atlantic Ave.
- 95 Massachusetts Beirut Memorial** (1992)  
Schreiber Associates Landscape Architects  
Granite and bronze  
Christopher Columbus Park, at Atlantic Ave.
- 96 Paul Revere** (1940)  
Cyrus Edwin Dallin  
Bronze on Milford granite  
Paul Revere Mall, between Hanover St. and Salem St.
- 97 North End Library Mosaics** (2009)  
Tom O'Connell  
Mosaic  
25 Parmenter St. between Hanover St. and Salem St.
- 98 Sudden Presence** (1971)  
Beverly Pepper  
Cor-Ten steel on Belgian blocks and bricks  
New Chardon St. and Congress St.
- 99 Asaroton** (1976)  
Mags Harries  
Bronze on concrete base  
Haymarket, at Hanover St. and Blackwell St.
- 100 New England Holocaust Memorial** (1995)  
Stanley Saitowitz  
Granite, glass, steel, concrete, and coal  
Congress St. between North St. and Hanover St.









Mayor's Office on the Arts, Tourism & Special Events  
 Boston City Hall  
 Room 802  
 Boston, Massachusetts 02201  
 617.635.3911  
[www.cityofboston.gov/arts](http://www.cityofboston.gov/arts)